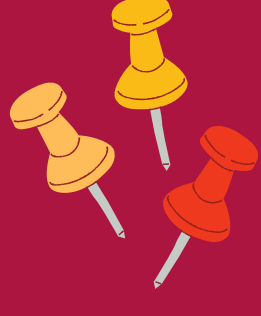


# ISTANBUL NİŞANTAŞI UNIVERSITY



## FACT SHEET





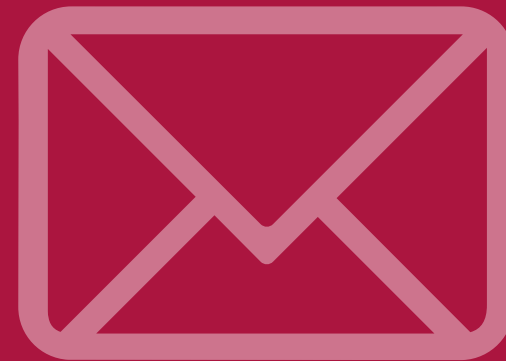
# INSTITUTIONAL INFORMATION

- Name of the University: İstanbul Nişantaşı University
- Erasmus Code: TR ISTANBU45
- Website: <https://international.nisantasi.edu.tr/?dil=eng>
- Address: Maslak Mahallesi, Taşyoncası Sokak, No: 1V ve No:1Y Bina  
Kodu: 34481742, 34398 Sarıyer/İstanbul
- Phone Number: +90 212 210 10 10

## Erasmus+ Office Contact Information



- Office email: [erasmus@nisantasi.edu.tr](mailto:erasmus@nisantasi.edu.tr)
- Erasmus+ Coordinator: Sena Duman  
email: [sena.duman@nisantasi.edu.tr](mailto:sena.duman@nisantasi.edu.tr)
- Erasmus+ Vice Coordinator: Hazal Emir  
email: [hazal.emir@nisantasi.edu.tr](mailto:hazal.emir@nisantasi.edu.tr)



## SOCIAL MEDIA

Instagram:

[instagram.com/erasmusnisantasiuni/](https://www.instagram.com/erasmusnisantasiuni/)

Website:

<https://www.nisantasi.edu.tr/?dil=eng>

Twitter:

<https://twitter.com/NisantasiEdu>



Instagram



# APPLICATION PROCEDURES

## NOMINATION DEADLINE :

Fall Semester : 15 August

Spring Semester : 15 November

★ Nominations must be sent via email to [erasmus@nisantasi.edu.tr](mailto:erasmus@nisantasi.edu.tr)

## APPLICATION DEADLINE :

Fall Semester : 15 September

Spring Semester : 15 december

★ Application documents must be sent via email to [erasmus@nisantasi.edu.tr](mailto:erasmus@nisantasi.edu.tr)

## APPLICATION DOCUMENTS

- İstanbul Nişantaşı University Application Form
- Online Learning Agreement or Learning Agreement in Word format
- Passport copy
- Picture in ID/Passport format

Language Instruction: At least B1 Level English



## GRADING SYSTEM

İstanbul Nişantaşı University uses the typical American A-F scale where GPA is calculated on a scale of 4.00. The letter grades, coefficients and percentage equivalents are given below.

SCORE	GRADE	COEFFICIENT
90-100	AA	4.00
85-89	BA	3.50
80-84	BB	3.00
75-79	CB	2.50
70-74	CC	2.00
60-69	DC	1.50
50-59	DD	1.00
0-49	FF	0.00
0-00	NA	0.00

The student's achievement is measured in the form of a Grade Point Average (GPA). The total credit points for a course are obtained by multiplying the coefficient of the final grade by the credit hours. In order to calculate the GPA for any given semester, the total credit points are divided by the total credit hours.

## SELECT OF COURSES AND LANGUAGE OF INSTRUCTION

Some faculties of the İstanbul Nişantaşı University offer full degree study programmes in English language, open both to local and international students.

### ECTS CREDITS:

- 1 full academic year = 60 credits
- 1 semester = 30 credits



# ACADEMIC COORDINATORS

FACULTY OF ECONOMICS, ADMINISTRATIVE AND SOCIAL SCIENCES	Assist. Prof. Nazlı Kazanođlu	nazli.kazanoglu@nisantasi.edu.tr
FACULTY OF ENGINEERING AND ARCHITECTURE	Assoc. Prof. Arif Őenol ŐENER	arif.sener@nisantasi.edu.tr
FACULTY OF HEALTH SCIENCES	Assist. Prof. Gökay Kurtulan	gokay.kurtulan@nisantasi.edu.tr
FACULTY OF MEDICINE	Assoc. Prof. Zeynep Birsu Çinçin	zeynepbirsu.cincin@nisantasi.edu.tr
FACULTY OF ART AND DESIGN	Prof. Dr. Genco Berkin	genco.berkin@nisantasi.edu.tr
FACULTY OF DENTISTRY	Assist. Prof. Burçin KarataŐlı	burcin.karatasli@nisantasi.edu.tr
SCHOOL OF APPLIED SCIENCES	Assist. Prof. Süheyla Golcheshmeh	suheyla.golcheshmeh@nisantasi.edu.tr
SCHOOL OF CIVIL AVIATION	Assist. Prof. Hatice Arzu İnan	haticearzu.inan@nisantasi.edu.tr
SCHOOL OF PHYSICAL EDUCATION AND SPORTS	Res. Assist. Ezgi Ayaz	ezgi.ayaz@nisantasi.edu.tr
CONSERVATORY	Assist. Prof. Füsün Naz Altınel	fusunnaz.altinel@nisantasi.edu.tr
VOCATIONAL SCHOOL	Lect. Hakan Ünal	hakan.unal@nisantasi.edu.tr
VOCATIONAL SCHOOL OF HEALTH SCIENCES	Lect. Onur Atakan Sekibađ	onuratakan.sekibag@nisantasi.edu.tr
GRADUATE SCHOOL	Assist. Prof. Fatih Mehmet Bulut	fatih.bulut@nisantasi.edu.tr



# PRACTICAL INFORMATION

## ACCOMMODATION:

### REPUBLİKA

Address: Maslak Mahallesi, Ağaoğlu Maslak  
1453 – B4 Blok, Sarıyer / ISTANBUL

Phone: +90 212 401 80 80

Website: <http://www.dormia.com.tr/>

E-mail: [info@republika.com.tr](mailto:info@republika.com.tr)



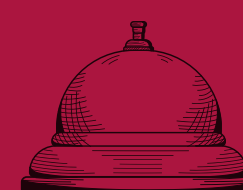
### DORMIA (Girls only)

Address: Kağıthane Merkez Mah. Ece Sk. No:12 Kağıthane - ISTANBUL

Phone: +90 212 219 5788

Website: <http://www.dormia.com.tr/>

E-mail: [info@dormia.com.tr](mailto:info@dormia.com.tr)



### ACADEMIA RESIDENCE

Address: Kağıthane Merkez Mah. Çobançeşme Cad. Sardunya Sk. No:4 Kağıthane Merkez -  
ISTANBUL

Phone: +90 212 295 4510 - 11 / +90 535 401 7070

Website: <http://www.academiaresidence.com/>

E-mail: [info@academiaresidence.com](mailto:info@academiaresidence.com)

### ERASMUSINN

'Main Office' Address: Gümüşsuyu, 34437 Taksim – Beyoğlu / ISTANBUL

Phone : +90 850 885 1004 / +90 534 407 0089

Web site : [www.erasmusinn.com](http://www.erasmusinn.com)

E-mail : [help@erasmusinn.com](mailto:help@erasmusinn.com)



### ERASMUS STUDENT HOUSING ISTANBUL

'Main Office' Address: Kurtuluş – Şişli/İstanbul

Phone: +90 533 648 8440

Website: [www.erasmushouses.com](http://www.erasmushouses.com)

E-mail: [info@erasmushouses.com](mailto:info@erasmushouses.com)



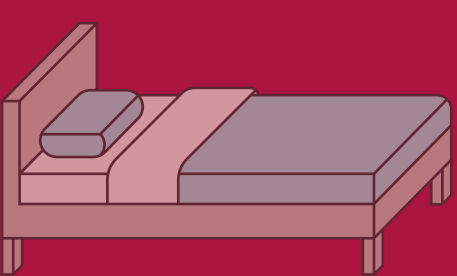
<https://www.airbnb.com.tr/>

<https://www.sahibinden.com/>

<https://www.hepsiemlak.com/emlak?p41=99981>

In addition, if you need help to find accommodation you may contact with ESN Nişantaşı

via e-mail: [esnnisantasi@esnturkey.org](mailto:esnnisantasi@esnturkey.org)





# PRACTICAL INFORMATION

## TRANSPORTATION:

İstanbul Airport: <https://www.istairport.com/>

From İstanbul Airport, you can use

IETT Municipal Public Bus

HAVAİST Airport Shuttle

Taxi

Shared Shuttle

Private Shuttle

Sabiha Gökçen Airport: <https://www.istairport.com/>

You can use E10 or E11 lines, from Sabiha Gökçen Airport to Kadıköy and then ferry (from Kadıköy to many ferry stations, including some in the Sultanahmet area). A pricier option is the

Havabüs connects this airport with Taksim in the city center and takes about an hour

## CAMPUS:

Maslak Mahalesi, Taşyoncası Sokak, No: 1V ve No:1Y Sarıyer-İSTANBUL - Bina Kodu : 34481742

<https://www.nisantasi.edu.tr/sayfa/maslak-1453-kampusu-461332-101769>

## FOR REACHING THE CAMPUS:

METROBUS:<https://iett.istanbul/en>

METRO:<https://www.metro.istanbul/en/YolcuHizmetleri/AgHaritalari>





## STUDENT IDENTITY CARD



Student identity card (NISHCARD) is evidence of student status. Students use the identity card to gain entry to the University buildings and book loan from Library in campus. Besides that, students can use ID card to obtain other benefits deriving from the student status such as discounts on entrance fees to museums and other visits etc.

## İSTANBUL CARD

İstanbul Card has been used for the transportation in İstanbul. . Students may visit any İETT Application Centers to apply for Student Card. You need to take your passport, a photo, Student Certificate with you. Your IstanbulCard will be ready in 5 minutes. The main Application Centers are in Avcılar, Yenibosna, Karaköy, Kadıköy, Beşiktaş, in Pendik.

Working Hours:

08:30 – 18:00 (Monday-Friday)

09:00 – 17:00 (Saturday)



## INTERNET ACCESS IN CAMPUS

İstanbul Nişantaşı University offers students free Internet access in campus. If you have your own laptop, tablet or mobile device then you can use them to access the Internet via the campus Wi-Fi Turkcell Superonline.

## LIBRARY

İstanbul Nişantaşı University Central Library has around 22.000 books arranged by type (fiction, biography, history, and so on) in shelves that hold about 50 books each. İstanbul Nişantaşı University students may use the basic services of the Library free of charge with their student identity card.

If the Library does not have the resources which you require, then you may fill in the 'request form' to provide them.

Working Hours:

08:00 – 21:00 (Monday-Friday)





# SOCIAL OPPORTUNITIES

## Library



## Laboratory



Student life and experience is an essential part of academic success and life at our university.

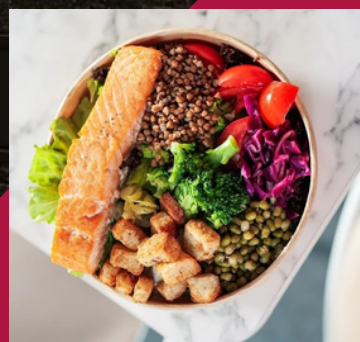
# STUDENT CLUBS





# CAMPUS FACILITIES

## Food Court





# CAMPUS FACILITIES



## Gastronomy Kitchen

## Sports Area





# STUDENT ORGANIZATIONS

İstanbul Nişantaşı University students possess the ability to engage in multiple interests. The approximately 80+ student organizations found on campus enrich the social, cultural and educational experiences.

İstanbul Nişantaşı University is active in a variety of areas of student life:

- Social: student services, legal assistance, accommodation finding services.
- Cultural: choirs, dance groups, publishing, radio.
- Sports.
- International co-operation.
- Other extracurricular activities.



Erasmus Student Network (ESN) is a group of students at the İstanbul Nişantaşı University forming a part of ESN International. Main task of ESN Nişantaşı is to participate in the receiving of exchange students, including mentorship, sightseeing and social gatherings.



INTERNATIONAL EXCHANGE  
ERASMUS STUDENT NETWORK



# GET TO KNOW İSTANBUL



**Taksim**



**Galata Tower**



**Sultanahmet Mosque**



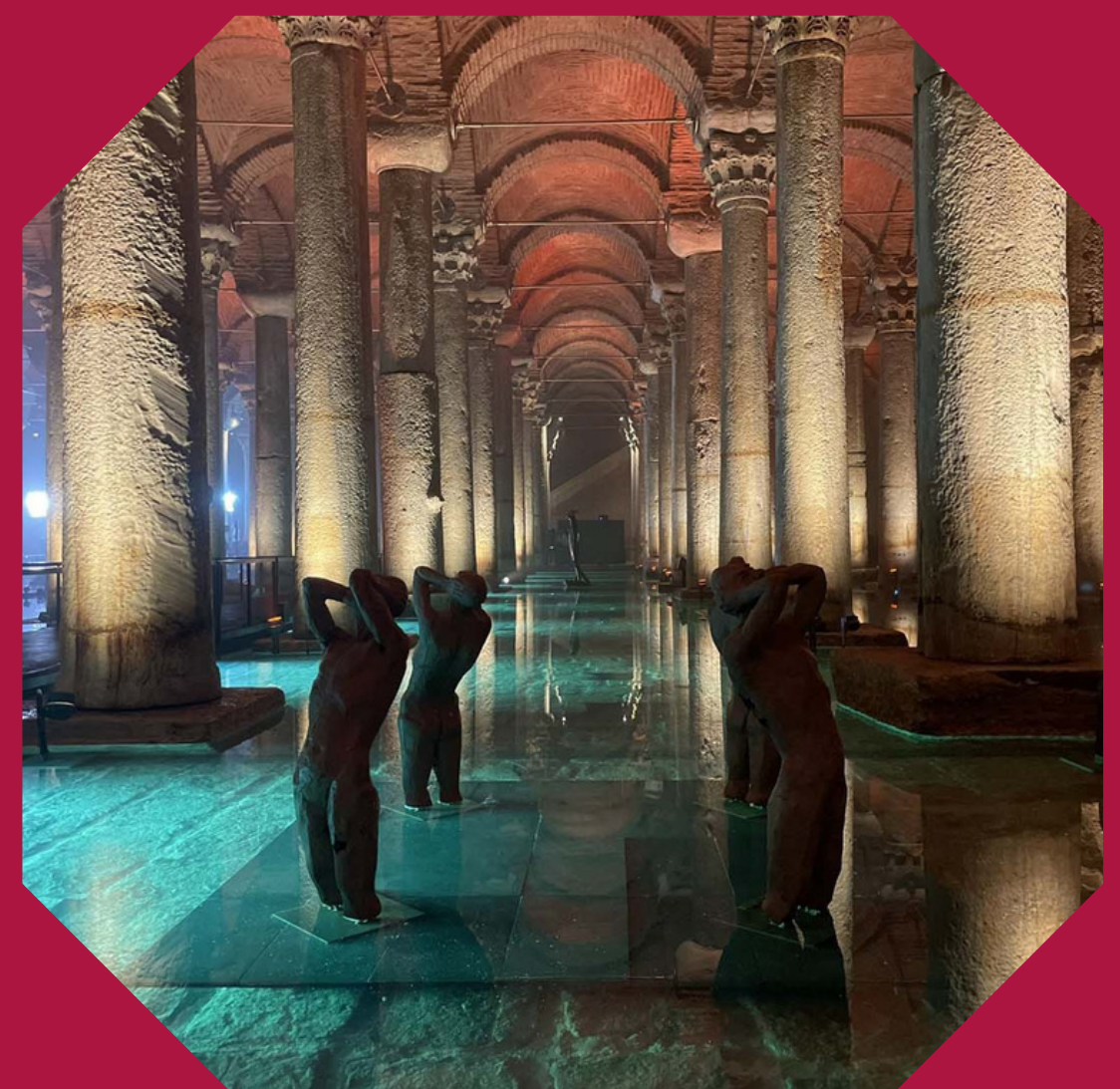
**Hagia Sofia Mosque**



**Maiden Tower**



**Beylerbeyi Palace**



**Basilica Cistern**





## APPROXIMATE COST OF LIVING

TYPES OF EXPENCES	MONTHLY AMOUNT
Food	150-180 €
Transportation	10-15 €
Housing	200-250 €



## PHONE CODES AND EMERGENCY NUMBERS

İstanbul is the only city/province in Türkiye which has more than one telephone code: 212 for European side, 216 for Asian side and Princes' Islands. When calling from one continent to the other, the usual dialing format used for intercity calls should be used, as if it's an intercity call: 0+area code (212 or 216) +7-digit telephone number.

### CODES

Country Code for Türkiye: +90 / 0090

Postal Code for İstanbul: 34000

### EMERGENCY NUMBER

Dial 112

